

# Instructions of network connection

## What you can do

Your laptop, tablet, and other mobile devices can be connected to wireless network in KEK and J-PARC during the school. The eduroam is the default Wi-Fi service, which can be accessed from most of KEK/Tsukuba campus including dormitory. There are some locations where the eduroam signal is weak or not available. In such locations, we provide alternative Wi-Fi service. For those who wish to print documents etc., a color-laser network printer (A4 size) is available at headquarter.

## Before start connection (important!)

- **Eduroam account agreement**

For those who already have a valid eduroam account in your home institute, one can connect the eduroam Wi-Fi network with your own account. If not, we'll provide an account for each participant. The account information is given in a separate document enclosed in this package. If you wish to use this account, please fill in the agreement in the bottom half of the account document, detach and submit it to headquarter.

- **Responsibilities and cautions for network users in KEK**

- 1) **Security on your computer**

Operating system must be adopted the latest patch to keep the computer security up to date. For Windows machine, Windows Update must be executed.

- 2) **Anti-virus software**

Anti-virus software must be installed and run in the computer. Virus definitions must be always up to date.

**3) File exchange software**

Running file exchange software, such as Winny, Bit-torrent, etc, in the network is not allowed.

**4) Security incident**

In the case of any security incident, such as virus infection, attacks, you must report security incident to the network liaison personnel promptly.

**5) Network connection**

It is not allowed to add private wireless network as well as connecting your computer to the wired network LAN on campus.

**6) Others**

The computer network in KEK is solely for research purpose. All network traffic is monitored and recorded. You are not supposed to use the network for the activities not related to research, experiment, and presentation for the purpose of your visit.

## Network connection via eduroam

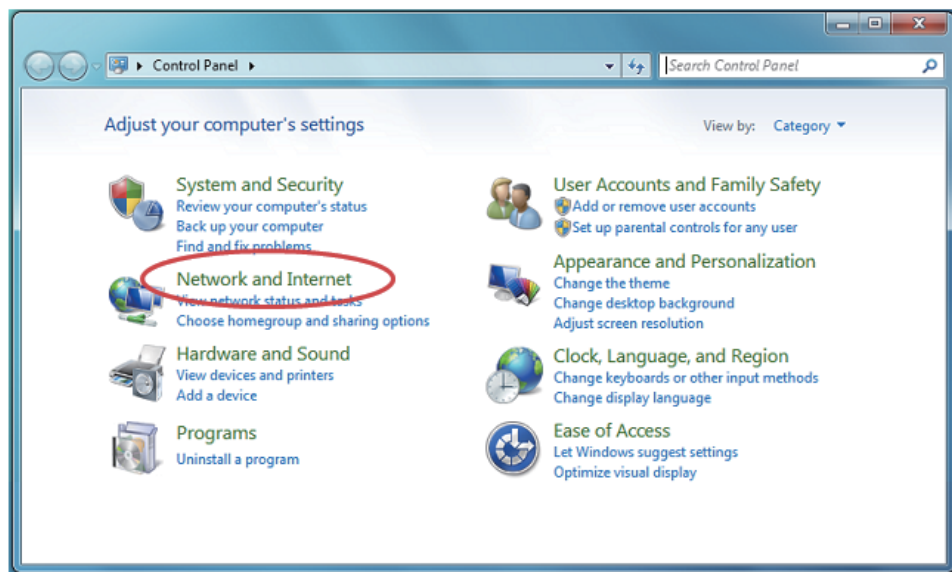


The eduroam Wi-Fi network service offers 150 wireless access points, which cover most area of KEK/Tsukuba campus. Instruction to network connection via eduroam is given in the following (for Windows 7).

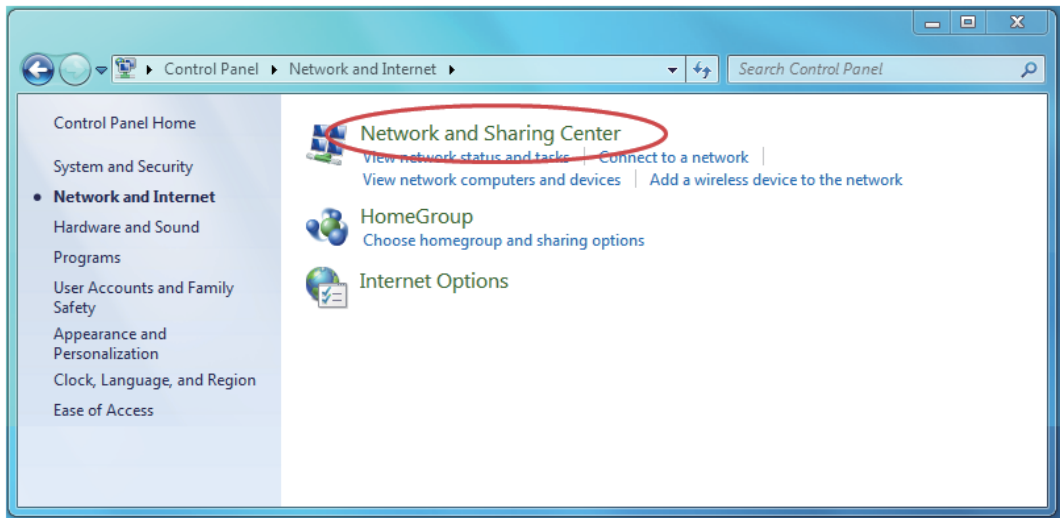
(Reference : <http://www.oucs.ox.ac.uk/network/wireless/services/eduroam/windows7/>)

The following instructions apply to using the Eduroam wireless service on Microsoft Windows 7 machines.

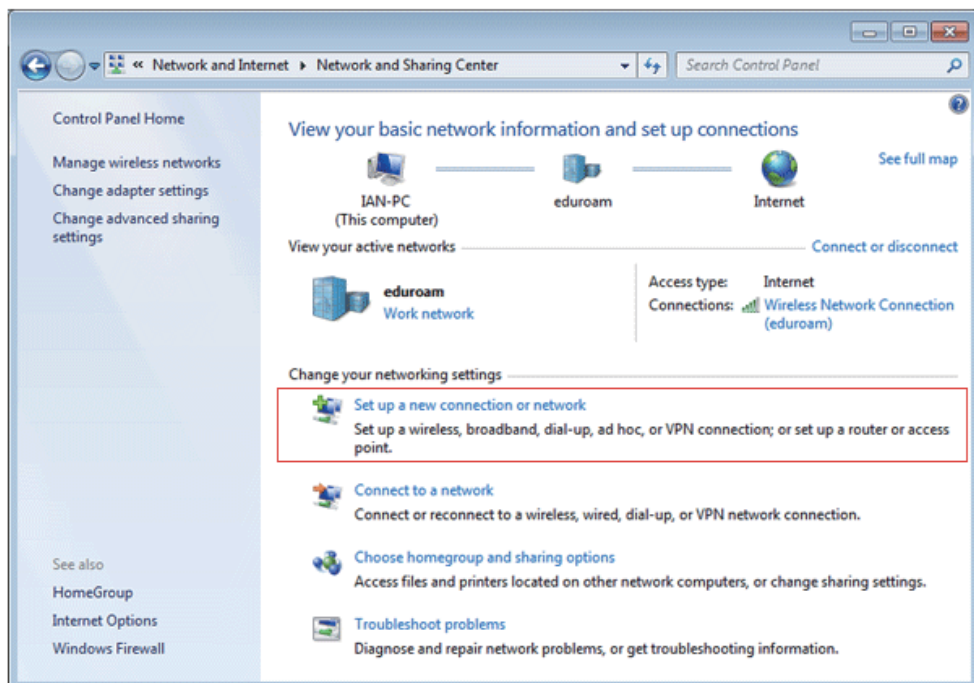
1. Select [Start] and then [Control Panel]. In the Control Panel, select [Network and internet]



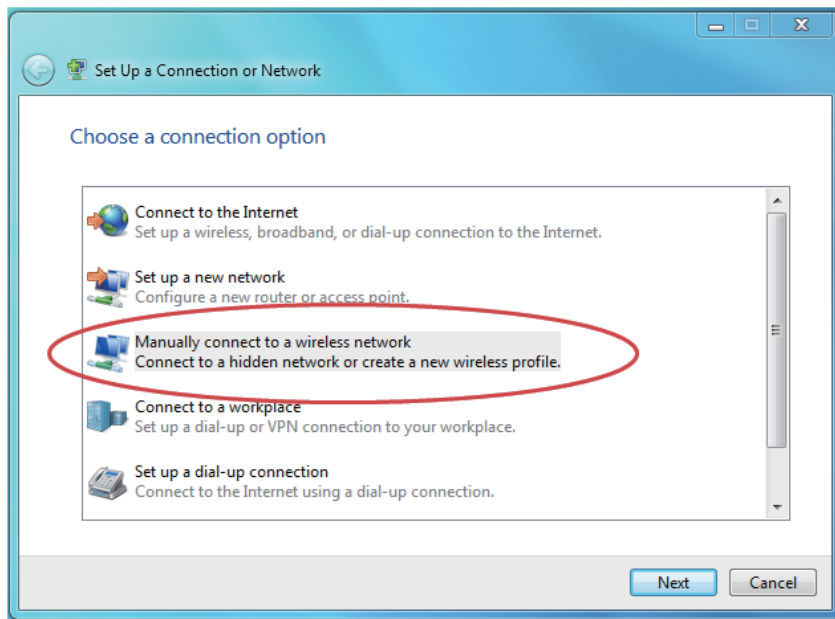
2. In the "Network and Internet" panel, click on [Network and Sharing Centre]



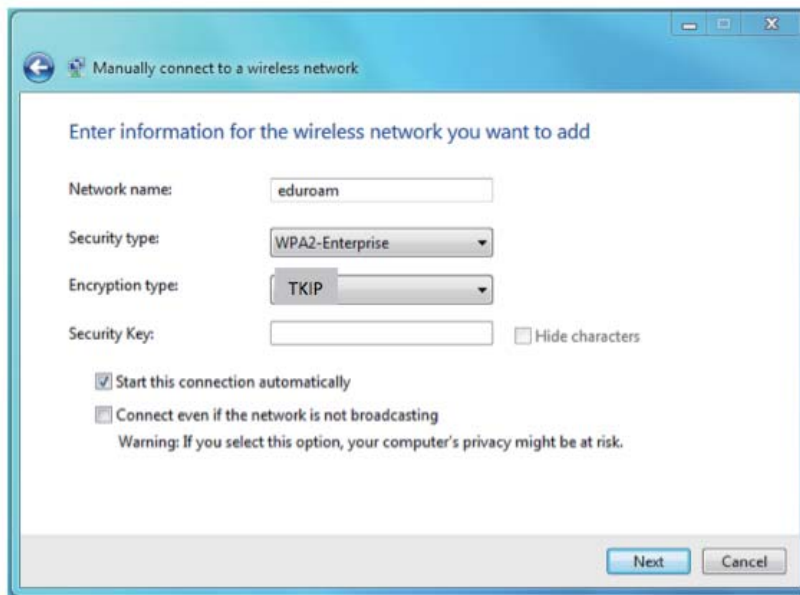
3. In the Network and Sharing centre, select [Setup a New Connection or Network]



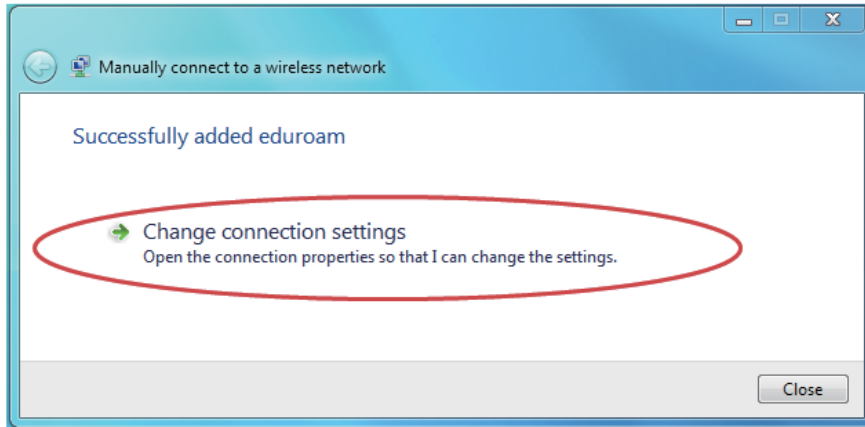
4. Select **[Manually connect to a wireless network]**



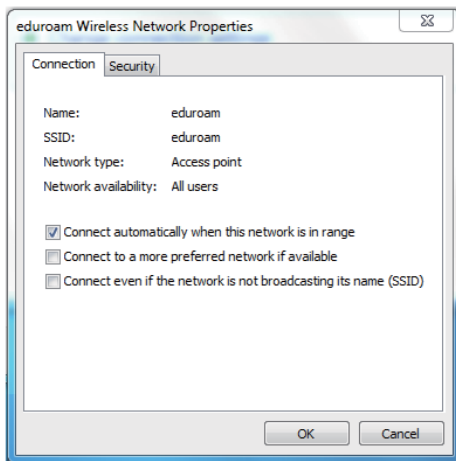
5. On the manual configuration screen, the **Network Name** is eduroam, **Security Type** is WPA2-Enterprise, **Encryption Type** is TKIP. After typing these in, click **[Next]**



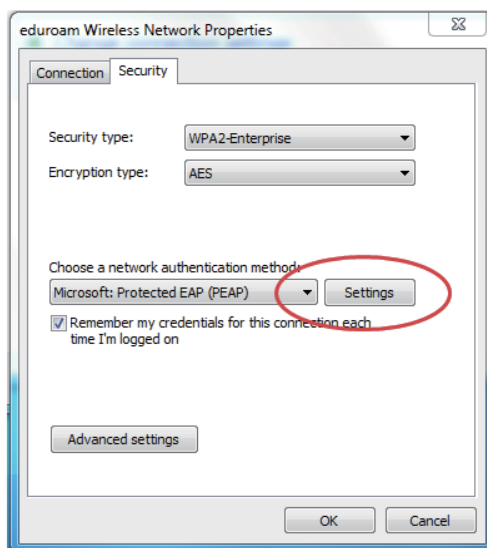
6. The next screen will say that the network has been configured. There are still more settings however, so select [\[Change Connection Settings\]](#)



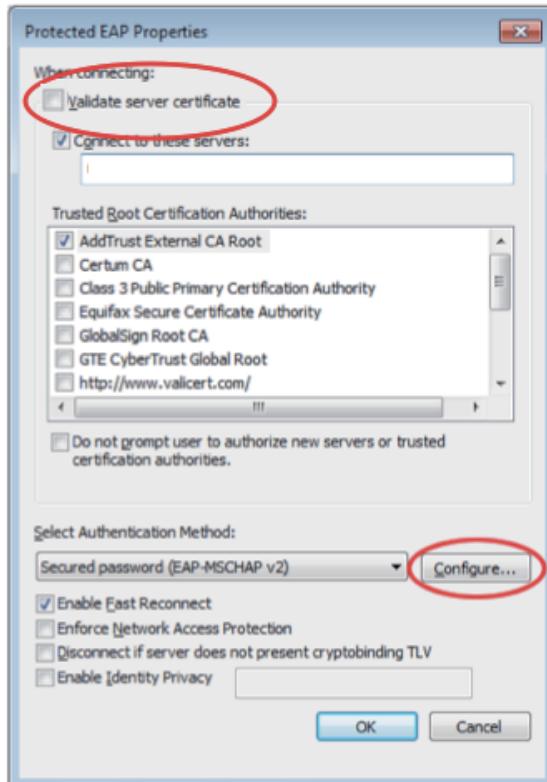
7. The initial screen should have the details filled in already,



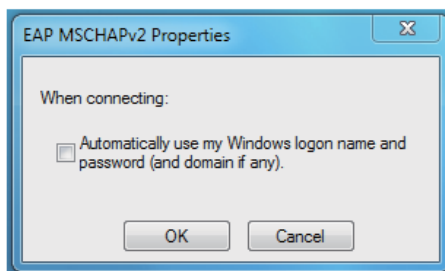
select the [\[Security\]](#) tab and then next to the [\[Microsoft: Protected EAP \(PEAP\)\]](#) option, click on the [settings](#) button.



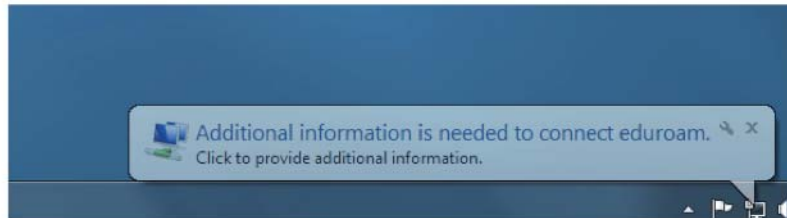
8. Uncheck the “validate server certificate”.  
Click on “Configure...”



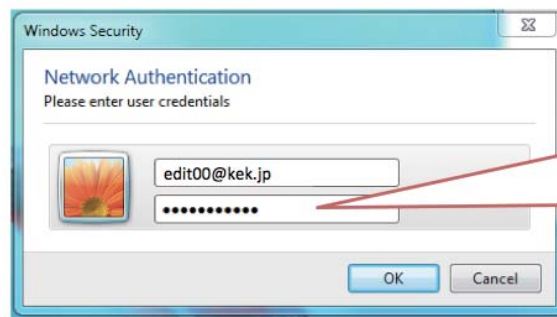
9. Uncheck the box to use your windows credentials, then click **OK**.



10. Select **OK** to close all the various dialogue boxes
11. Select **Close** to close the *Manually connect to a wireless network* screen.
12. Once near a eduroam access point, select the access point from the possible connections. You should get an automatic information box which will give a login prompt when selected



13. After this your login details must be entered to achieve full network usage. Enter your Remote Access account username followed by @kek.jp (here for example edit00@kek.jp) and your Remote Access account password (**Not** your Single Sign-On one!).



Username is given in the account document. Password consists of two parts A+B, where  
 A = "edit"  
 B is given in the account document.

That's it!

Instructions for other operating systems can be found elsewhere. For example, <http://www.oucs.ox.ac.uk/network/wireless/services/eduroam/> provides setting instructions for various systems. There are slight differences from our eduroam setup, but most of operations are the same.



## EX Wi-Fi network

The EX Wi-Fi network is a Wi-Fi with a standard WEP authorization, which does not require an eduroam account. It is available at headquarter and the laboratory of the SUP program where the eduroam signal is weak. The SSID and wep key are given below:

**SSID: edit2013**

**WEP key: (to be announced at the school)**

Note: Only limited number of access points is available for the EX Wi-Fi network. We recommend using eduroam as a default network connection.

## Printing service

A color laser printer is available at headquarter (Canon LBP 7700C). This printer can be accessed from the EX Wi-Fi network at headquarter. The printer IP address is **10.110.11.200**.

## Contact

Primary contact in the case of any questions or troubles is the network liaison personnel (Tsutomu Mibe, ext. 4344, [mibe@post.kek.jp](mailto:mibe@post.kek.jp)). There is an agreement that all communications to the KEK computing center should be made through the network liaison personnel. Please don't contact the KEK computing center directly at any instance.